

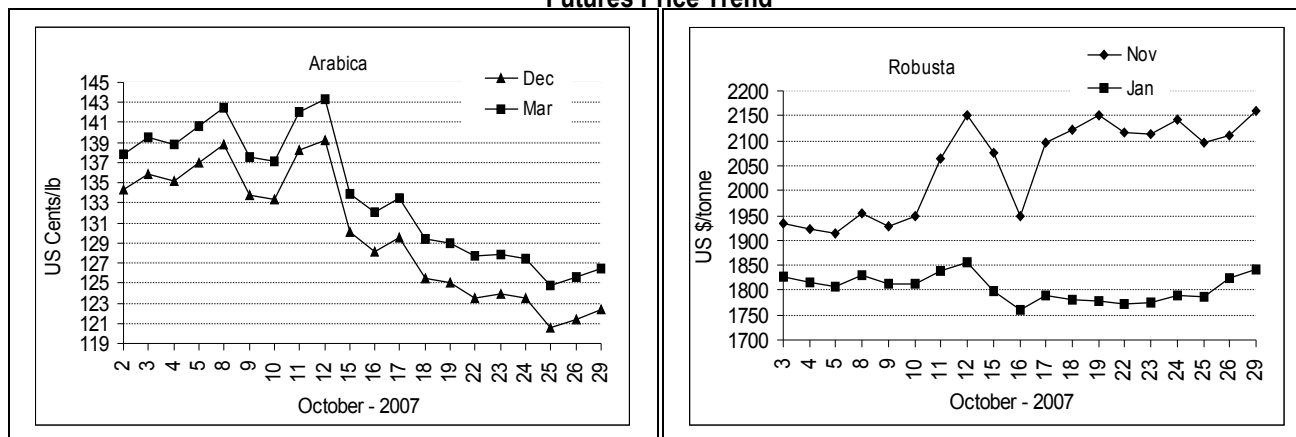
COFFEE BOARD: BANGALORE
Daily Coffee Market Report Tuesday October 30, 2007

Futures Prices 29.10.2007					
New York US cents / lb			London US \$ / tonne and cents / lb in brackets		
Month	Price	Prev. Price	Month	Price	Prev. Price
Dec – 2007	122.35	121.45	Nov – 2007	2160 (97.98)	2109 (95.66)
Mar – 2008	126.45	125.55	Jan – 2008	1843 (83.60)	1825 (82.78)
May – 2008	128.90	127.95	Mar – 2008	1790 (81.19)	1797 (81.51)

ICO Indicator Prices of 26.10.2007 and previous price in brackets (US cents/lb)

Arabica (N.Y)	Robusta (N.Y)	Exchange Rate Rs./ US \$
126.69 (125.88)	90.50 (89.00)	39.38

Futures Price Trend



Market Analysis

ICE pit-traded arabica coffee futures advanced on Monday recovering from an early sag and clearing Friday's highs as shorts covered while other commodities strengthened. ICE pit December closed 90 points higher at \$1.2235 a pound. LIFFE Jan settled up \$18 at \$ 1843/tonne while Mar settled down \$7 at \$1790/tonne.

Differentials:	Ar. Plant. A	Ar.Chy.AB	Rob.Pmt.AB	Rob.Chy.AB
	NY +2	NY -15	LIFFE +530	LIFFE +135

ICTA Auction Prices Rs/Kg as on 25.10.2007

Grade	MNEB/AA	PB	A	AB	B	C	BBB
Arabica Plantation	114.84	136.58	114.00	---	104.00	98.78	86.06
Arabica Cherry	102.00	---	---	---	---	80.00	---
	RKR	PB	AA	AB	C	BBB	
Robusta Parchment	---	---	---	---	---	---	
Robusta Cherry	---	77.30	78.94	79.88	---	74.00	

Raw Coffee Price (Karnataka) as on 27.10.2007 in Rs./50 kg

Ar.Pmt	Ar.Chy	Rob.Pmt	Rob.Chy
4000 - 4200	2100 - 2300	3800 - 3950	1800 - 1900

Export update: From 1st January to October 29, 2007 (in metric tonnes)

INDIAN COFFEE		Ar.Pmt	Ar.Chy	Rob.Pmt	Rob.Chy	Instant	Total
1	Provisional exports (Indian coffee)	28649	9824	18960	79481	42438	179352
2	Provisional exports corresponding period last year	45372	9682	22631	91763	20673	190121
3	Provisional re-exports					11997	11997
4	Provisional re-exports corresponding period last year					27677	27677
5	Total provisional exports (1+3)	28649	9824	18960	79481	54435	191349
6	Total provisional exports corresponding period last year (2+4)	45372	9682	22631	91763	48350	217798

Disclaimer: The Board neither guarantees the accuracy of the information nor accept any liability whatsoever for any direct or consequential loss arising from the use of this report.