

COFFEE BOARD: BANGALORE
Daily Coffee Market Report Saturday October 13, 2007

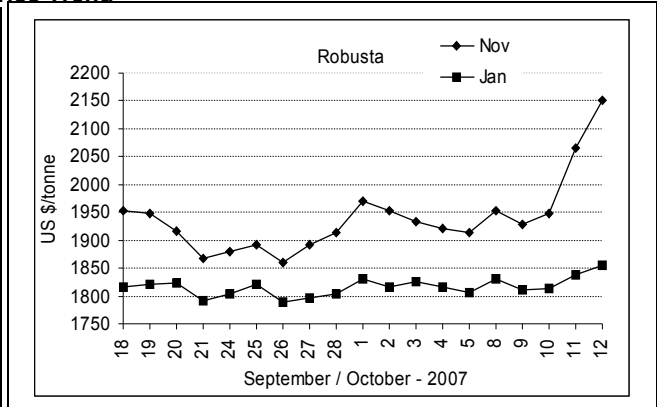
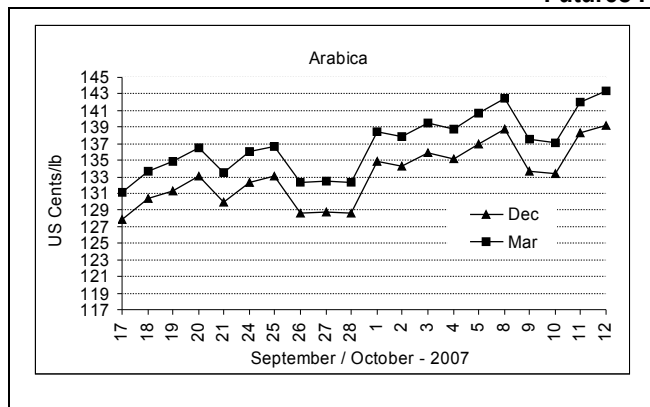
Futures Prices 12.10.2007					
New York US cents / lb			London US \$ / tonne and cents / lb in brackets		
Month	Price	Prev. Price	Month	Price	Prev. Price
Dec – 2007	139.20	138.25	Nov – 2007	2150 (97.52)	2065 (93.67)
Mar – 2008	143.30	142.00	Jan – 2008	1855 (84.14)	1838 (83.37)
May – 2008	144.95	143.85	Mar – 2008	1819 (82.51)	1800 (81.65)

ICO Indicator Prices of 11.10.2007 and previous price in brackets (US cents/lb)

Arabica (N.Y)	Robusta (N.Y)
142.88 (138.25)	101.00 (95.75)

Exchange Rate Rs./ US \$
39.33

Futures Price Trend



Market Analysis

ICE pit-traded arabica coffee futures sped to 10-month highs on Friday buoyed by worries about dryness in Brazil, but gains were pared in positioning before the November options expired Friday. London robusta futures reached nine-year highs. December closed 105 points higher at \$1.3930 a pound. LIFFE January settled up \$17 at \$1855/tonne while March settled up \$19 at \$1819/tonne.

Differentials:	Ar. Plant. A	Ar.Chy.AB	Rob.Pmt.AB	Rob.Chy.AB
	NY +2	NY -15	LIFFE +530	LIFFE +135

ICTA Auction Prices Rs/Kg as on 11.10.2007

Grade	MNEB/AA	PB	A	AB	B	C	BBB
Arabica Plantation	116.90	134.40	116.00	---	106.00	---	77.20
Arabica Cherry	---	96.00	---	---	---	---	---
	RKR	PB	AA	AB	C	BBB	
Robusta Parchment	---	---	---	---	---	74.00	
Robusta Cherry	---	78.00	80.00	---	76.00	75.70	

Raw Coffee Price (Karnataka) as on 13.10.2007 in Rs./50 kg

Ar.Pmt	Ar.Chy	Rob.Pmt	Rob.Chy
4500 - 4550	2350 - 2500	3900 - 4050	1900 - 1975

Export update: From 1st January to October 12, 2007 (in metric tonnes)

INDIAN COFFEE		Ar.Pmt	Ar.Chy	Rob.Pmt	Rob.Chy	Instant	Total
1	Provisional exports (Indian coffee)	27872	9468	18449	76315	41598	173702
2	Provisional exports corresponding period last year	44842	9178	21547	88044	18526	182137
3	Provisional re-exports					10037	10037
4	Provisional re-exports corresponding period last year					26512	26512
5	Total provisional exports (1+3)	27872	9468	18449	76315	51635	183739
6	Total provisional exports corresponding period last year (2+4)	44842	9178	21547	88044	45038	208649

Disclaimer: The Board neither guarantees the accuracy of the information nor accept any liability whatsoever for any direct or consequential loss arising from the use of this report.