

**COFFEE BOARD: BANGALORE**  
**Daily Coffee Market Report Thursday October 11, 2007**

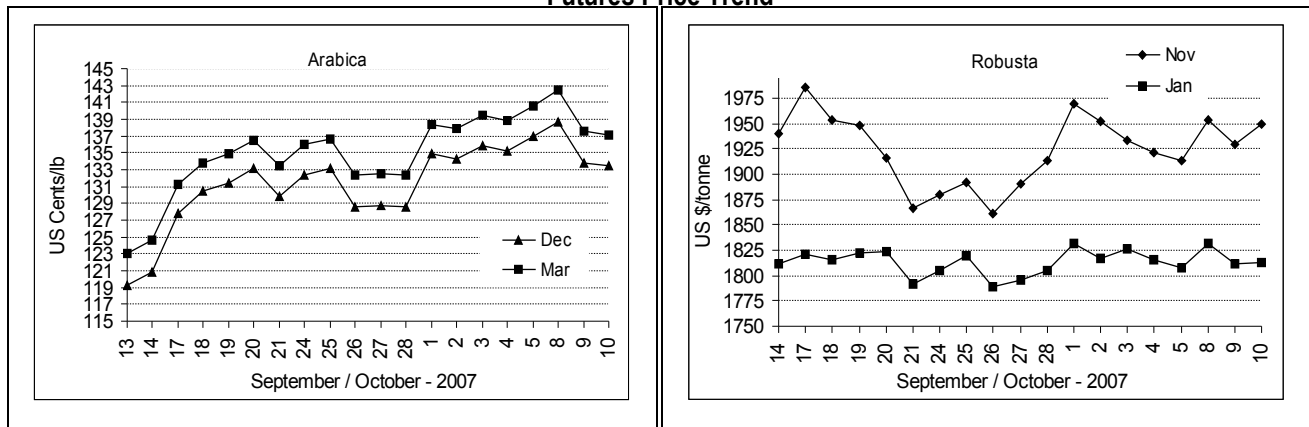
Futures Prices 10.10.2007					
New York US cents / lb			London US \$ / tonne and cents / lb in brackets		
Month	Price	Prev. Price	Month	Price	Prev. Price
Dec – 2007	133.40	133.75	Nov – 2007	1949 (88.41)	1929 (87.50)
Mar – 2008	137.15	137.55	Jan – 2008	1813 (82.24)	1812 (82.19)
May – 2008	139.05	139.45	Mar – 2008	1778 (80.65)	1784 (80.92)

**ICO Indicator Prices of 09.10.2007 and previous price in brackets (US cents/lb)**

Arabica (N.Y)	Robusta (N.Y)
138.75 (143.63)	94.75 (96.00)

Exchange Rate Rs./ US \$
39.34

**Futures Price Trend**



**Market Analysis**

ICE pit-traded arabica coffee futures finished lower on Wednesday erasing an almost 2.5 cent-a-pound rise after origins and locals sold and speculators took profits. Traders monitored forecasts for Brazil's growing areas - in need of moisture during the spring tree-flowering phase. December closed 35 points lower at \$1.3340 a pound. ICE December robusta coffee stood at 83.15 cents a pound in late action Wednesday. LIFFE robusta futures ended in a mixed note. While Jan ended \$1 up at \$1813/tonne, March closed \$6 down at \$1778/tonne.

Differentials:	Ar. Plant. A	Ar.Chy.AB	Rob.Pmt.AB	Rob.Chy.AB
	NY +2	NY -15	LIFFE +530	LIFFE +135

**ICTA Auction Prices Rs/Kg as on 04.10.2007**

Grade	MNEB/AA	PB	A	AB	B	C	BBB
Arabica Plantation	118.90	134.42	115.60	----	104.78	101.30	95.20
Arabica Cherry	----	95.12		----	----	----	----
	RKR	PB	AA	AB	C	BBB	
Robusta Parchment	----	----	----	----	----	----	
Robusta Cherry	---	78.24	81.84	----	77.00	73.50	

**Raw Coffee Price (Karnataka) as on 10.10.2007 in Rs./50 kg**

Ar.Pmt	Ar.Chy	Rob.Pmt	Rob.Chy
4400 - 4500	2300 - 2450	3750 - 4000	1875 - 1950

**Export update: From 1<sup>st</sup> January to October 10, 2007 (in metric tonnes)**

INDIAN COFFEE		Ar.Pmt	Ar.Chy	Rob.Pmt	Rob.Chy	Instant	Total
1	Provisional exports (Indian coffee)	27755	9402	18410	76468	41590	173625
2	Provisional exports corresponding period last year	44696	9103	21509	87403	18042	180753
3	Provisional re-exports					9833	9833
4	Provisional re-exports corresponding period last year					26372	26372
5	Total provisional exports (1+3)	27755	9402	18410	76468	51423	183458
6	Total provisional exports corresponding period last year (2+4)	44696	9103	21509	87403	44414	207125

Disclaimer: The Board neither guarantees the accuracy of the information nor accept any liability whatsoever for any direct or consequential loss arising from the use of this report.