

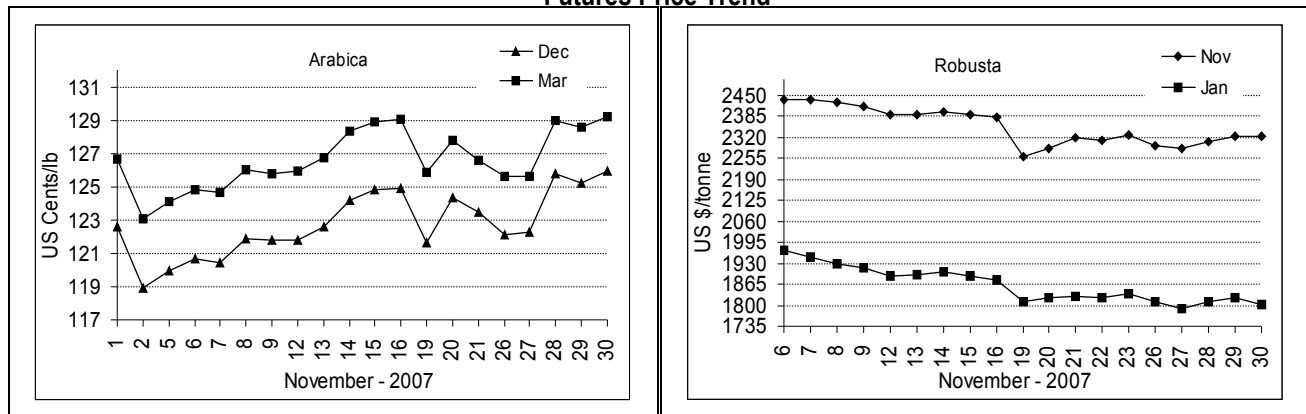
**COFFEE BOARD: BANGALORE**  
**Daily Coffee Market Report Saturday December 01, 2007**

Futures Prices 30.11.2007					
ICE (New York) US cents / lb			London US \$ / tonne and cents / lb in brackets		
Month	Price	Prev. Price	Month	Price	Prev. Price
Dec – 2007	125.95	125.20	Nov – 2007	2323 (105.37)	2323 (105.37)
Mar – 2008	129.20	128.55	Jan – 2008	1803 (81.78)	1825 (82.78)
May – 2008	131.70	131.10	Mar – 2008	1806 (81.92)	1824 (82.74)

**ICO Daily weighted average price on 29.11.2007 and previous price in brackets (US cents/lb)**

Other Mild Arabica	Robusta	Exchange Rate Rs./ US \$
133.69 (133.96)	90.38 (89.62)	39.67

**Futures Price Trend**



**Market Analysis**

ICE pit-traded arabica coffee futures prices finished modestly higher and at a bullish weekly and monthly high close Friday. March coffee closed 45 points higher at 129.00 cents. End-of-month fund buying was featured. Buying was also inspired by anticipation of lower crop production estimates coming out of Brazil next week. LIFFE robusta coffee traded down on Friday on speculative selling and generally lower commodity markets. January coffee finished down \$22 at \$1,803 a metric ton with 7,417 lots moved. March ended down \$18 at \$1,806/ton with 3,457 lots traded.

Differentials:	Ar. Plant. A	Ar.Chy.AB	Rob.Pmt.AB	Rob.Chy.AB
	NY +3	NY -15	LIFFE +530	LIFFE +130

**ICTA Auction Prices Rs/Kg as on 29.11.2007**

Grade	MNEB/AA	PB	A	AB	B	C	BBB
Arabica Plantation	112.00	----	108.84	----	99.28	95.10	80.00
Arabica Cherry	----	96.16	-----	99.52	----	84.00	----
	RKR	PB	AA	AB	C	BBB	
Robusta Parchment	----	----	----	-----	----	----	
Robusta Cherry	---	----	80.00	78.38	76.00	74.00	

**Raw Coffee Price (Karnataka) as on 01.12.2007 in Rs./50 kg**

Ar.Pmt	Ar.Chy	Rob.Pmt	Rob.Chy
4150 - 4300	2175 - 2325	3775 - 4100	1850 - 1950

**Export update: From 1<sup>st</sup> January to November 30, 2007 (in metric tonnes)**

INDIAN COFFEE		Ar.Pmt	Ar.Chy	Rob.Pmt	Rob.Chy	Instant	Total
1	Provisional exports (Indian coffee)	29554	11059	20413	84679	46090	191795
2	Provisional exports corresponding period last year	46375	10478	24219	100695	23971	205738
3	Provisional re-exports	---	---	---	---	15694	15694
4	Provisional re-exports corresponding period last year	---	---	---	---	29823	29823
5	Total provisional exports (1+3)	29554	11059	20413	84679	61784	207489
6	Total provisional exports corresponding period last year (2+4)	46375	10478	24219	100695	53794	235561

Disclaimer: The Board neither guarantees the accuracy of the information nor accept any liability whatsoever for any direct or consequential loss arising from the use of this report.