

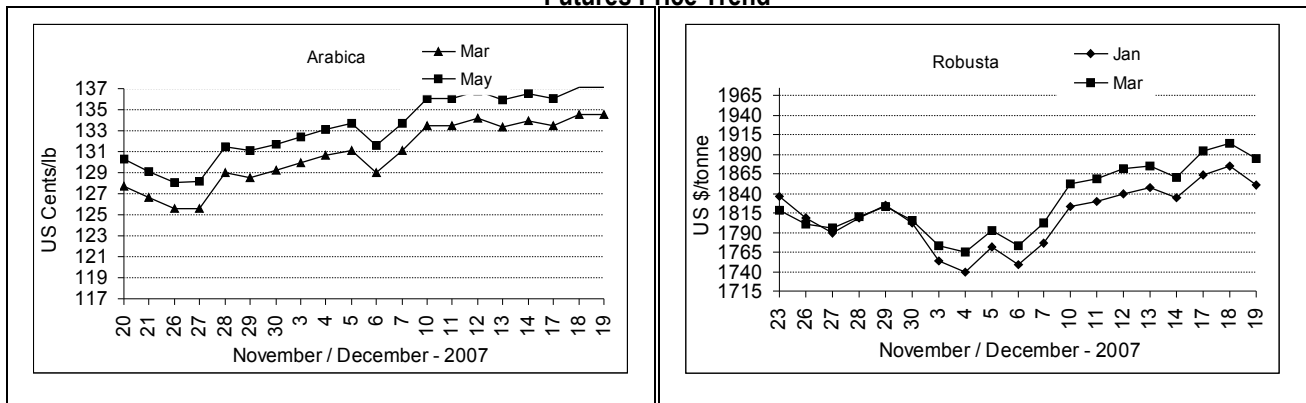
COFFEE BOARD: BANGALORE
Daily Coffee Market Report Thursday December 20, 2007

Futures Prices 19.12.2007					
ICE (New York) US cents / lb			London US \$ / tonne and cents / lb in brackets		
Month	Price	Prev. Price	Month	Price	Prev. Price
Mar – 2007	134.50	131.35	Jan – 2008	1850 (83.91)	1875 (85.05)
May – 2008	137.10	134.55	Mar – 2008	1884 (85.46)	1904 (86.36)
Jul – 2008	139.60	137.10	May – 2008	1906 (86.45)	1922 (87.18)

ICO Daily weighted average price on 18.12.2007 and previous price in brackets (US cents/lb)

Other Mild Arabica	Robusta	Exchange Rate Rs./ US \$
138.50 (139.01)	96.13 (93.96)	39.55

Futures Price Trend



Market Analysis

ICE pit-traded arabica coffee futures ended narrowly mixed on Wednesday after reaching a two-month high as speculators took profits and the London robustas retreated. Funds continue to buy coffee futures as commodities rise overall, but traders said a projected-large Brazilian new crop will keep gains in check. ICE pit March closed down 5 points at \$1.3450 a pound while May finished unchanged at \$1.3710. LIFFE Jan settled down \$25 at \$1850/tonne while Mar settled down \$20 at \$1884/tonne.

Differentials:	Ar. Plant. A	Ar.Chy.AB	Rob.Pmt.AB	Rob.Chy.AB
	NY +3	NY -15	LIFFE +530	LIFFE +130

ICTA Auction Prices Rs/Kg as on 13.12.2007

Grade	MNEB/AA	PB	A	AB	B	C	BBB
Arabica Plantation	---	134.58	110.00	---	102.02	98.00	---
Arabica Cherry	---	---	---	---	---	---	---
	RKR	PB	AA	AB	C	BBB	
Robusta Parchment	---	---	---	---	---	---	---
Robusta Cherry	---	---	80.00	---	---	74.22	---

Raw Coffee Price (Karnataka) as on 18.12.2007 in Rs./50 kg

Ar.Pmt	Ar.Chy	Rob.Pmt	Rob.Chy
4500 - 4600	2500 - 2600	3850 - 4100	1900 - 1925

Export update: From 1st January to December 19, 2007 (in metric tonnes)

INDIAN COFFEE		Ar.Pmt	Ar.Chy	Rob.Pmt	Rob.Chy	Instant	Total
1	Provisional exports (Indian coffee)	30031	11634	20664	89326	48023	199678
2	Provisional exports corresponding period last year	47062	11065	25016	104733	25208	213084
3	Provisional re-exports	---	---	---	---	17748	17748
4	Provisional re-exports corresponding period last year	---	---	---	---	31703	31703
5	Total provisional exports (1+3)	30031	11634	20664	89326	65771	217426
6	Total provisional exports corresponding period last year (2+4)	47062	11065	25016	104733	56911	244787

Disclaimer: The Board neither guarantees the accuracy of the information nor accept any liability whatsoever for any direct or consequential loss arising from the use of this report.